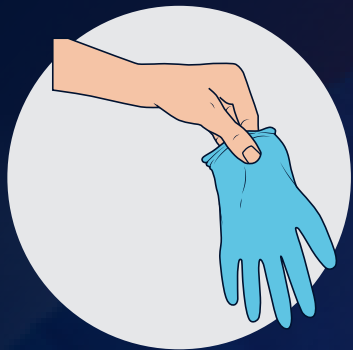


CORRECT DONNING OF DISPOSABLE GLOVES



STEP 1



Remove one glove from the dispenser. Prior to donning, make sure to inspect for any pinholes or tears.

STEP 2



Making sure to hold only the cuff, insert your thumb and four fingers into the glove.

STEP 3



Holding only the cuff, ease five fingers and your palm into the glove.

STEP 4



Gently pull the wrist end with your thumb and fingers, while easing the hand fully into the glove.

STEP 5

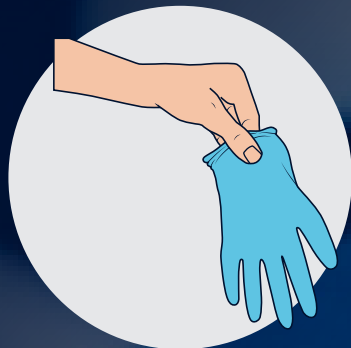


Pull the glove to a comfortable and secure fit, then repeat the procedure for your other hand.

CORRECT DOFFING OF DISPOSABLE GLOVES



STEP 1



To start doffing the glove, grasp the outside cuff edge with your other hand.

STEP 2



Peel the glove away from your hand, turning it inside out. Hold the glove in the opposite gloved hand.

STEP 3



With the ungloved hand, grasp the wrist of the remaining glove - being careful not to touch the outside of the glove.

STEP 4



Peel the remaining glove off from the inside, creating a hold for both gloves. Then discard appropriately.