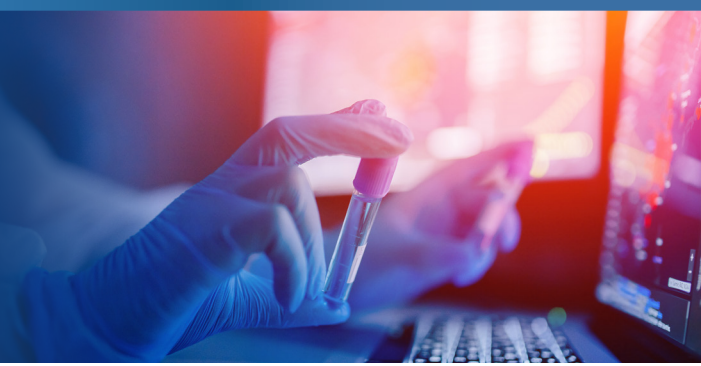


# HAND PROTECTION SELECTION GUIDE

Helping you select the right glove to ensure optimal protection & productivity.



Glove Type	Description	Automotive	Healthcare	Dental	Pharmaceutical	Scientific	Hospitality/ Food	Industry	Agricultural	Transport	Hair & Beauty	Dairy
Nitrile	<b>Blue</b> Nitrile Long Cuff (300mm), 6.0g		✓	✓	✓	✓	✓	✓	✓	✓	✓	
	<b>Blue</b> Nitrile Extended Cuff (400mm), 8.0g		✓	✓	✓	✓	✓	✓	✓	✓	✓	
	<b>Blue</b> Nitrile Std Cuff, 3.2g/3.5g		✓	✓	✓	✓	✓	✓	✓	✓	✓	
	<b>Blue</b> Nitrile Std Cuff, 4.3g Chemo-Rated		✓	✓	✓	✓	✓	✓	✓	✓	✓	
	Premium <b>Black</b> Nitrile, Std Cuff, 5.0g	✓				✓	✓	✓				✓
	Premium <b>Orange</b> Nitrile, Std Cuff, 5.0g	✓				✓	✓	✓				✓
	Premium <b>Green</b> Nitrile, Std Cuff, 5.0g	✓				✓	✓	✓				✓
	<b>Blue</b> Diamond Grip Nitrile	✓							✓	✓	✓	✓
<b>Orange</b> Diamond Grip Nitrile	✓							✓	✓	✓	✓	
Superstretch	<b>Blue</b> Superstretch, TPE						✓				✓	
	<b>Clear</b> Superstretch, TPE						✓				✓	
Vinyl & Synthetic	<b>Clear</b> Vinyl, Powder Free							✓	✓	✓	✓	
	<b>Blue</b> Vinyl, Powder Free						✓					
	<b>Clear</b> Vinyl, Lightly Powdered							✓	✓	✓	✓	
	<b>Blue</b> Vinyl, Lightly Powdered						✓					
	Synthetic Stretch, <b>Smooth Cream</b>							✓		✓	✓	
Latex	Latex, Lightly Powdered, Smooth Textured	✓		✓	✓	✓			✓			
	Latex, Powder Free, Micro Textured	✓		✓	✓	✓			✓			
Flocklined	<b>Blue</b> Flocklined Rubber						✓					
	<b>Yellow</b> Flocklined Rubber						✓					
	<b>Green</b> Flocklined Rubber						✓					